



CLARE  
CLIMATE  
ADAPTATION  
& RESILIENCE



UK International  
Development  
Partnership | Progress | Prosperity



IDRC · CRDI



AIT  
Asian Institute of Technology

# CLARE-ASEAN: Accelerating Research for Sustainable and Inclusive Solutions for Enhanced Urban Resilience to Climate Change in ASEAN

## OBJECTIVES

To generate new knowledge and enhance the research capacity for understanding, identifying, and enabling urban resilience to climate change, involving the strengthening of physical, social, and governance aspects. Specifically, aiming to:



Enable socially inclusive and sustainable actions to support urban resilience to climate change, including through nature-based solutions.



Provide better information on climate risks, better decision-making tools, guidance, and better climate adaptation solutions to enable transformational change.

## EXPECTED OUTCOMES

### Outcomes:

- Enhanced urban resilience:** Improved capacity of urban system to withstand climate-related hazards through integrated governance, infrastructure, finance, and policy reforms, including nature-based solutions.
- Effective heat management strategies:** Development and implementation of strategies to manage heat risks.
- Inclusive climate solutions:** Empowered vulnerable communities/systems and decision makers with actionable tools and strategies for urban resilience to climate change.

### Outputs:

- Place-based research, local dialogues, and engagements with research uptake communities.
- Assessment reports, decision support research toolkits, and methods.
- Policy briefs, research communication, and research reports.
- Regional conferences and dialogues involving scientific, policy, and ASEAN/global communities.
- Collaborative regional consortium and multi-country platform.
- Contribution to CLARE Knowledge Repository.

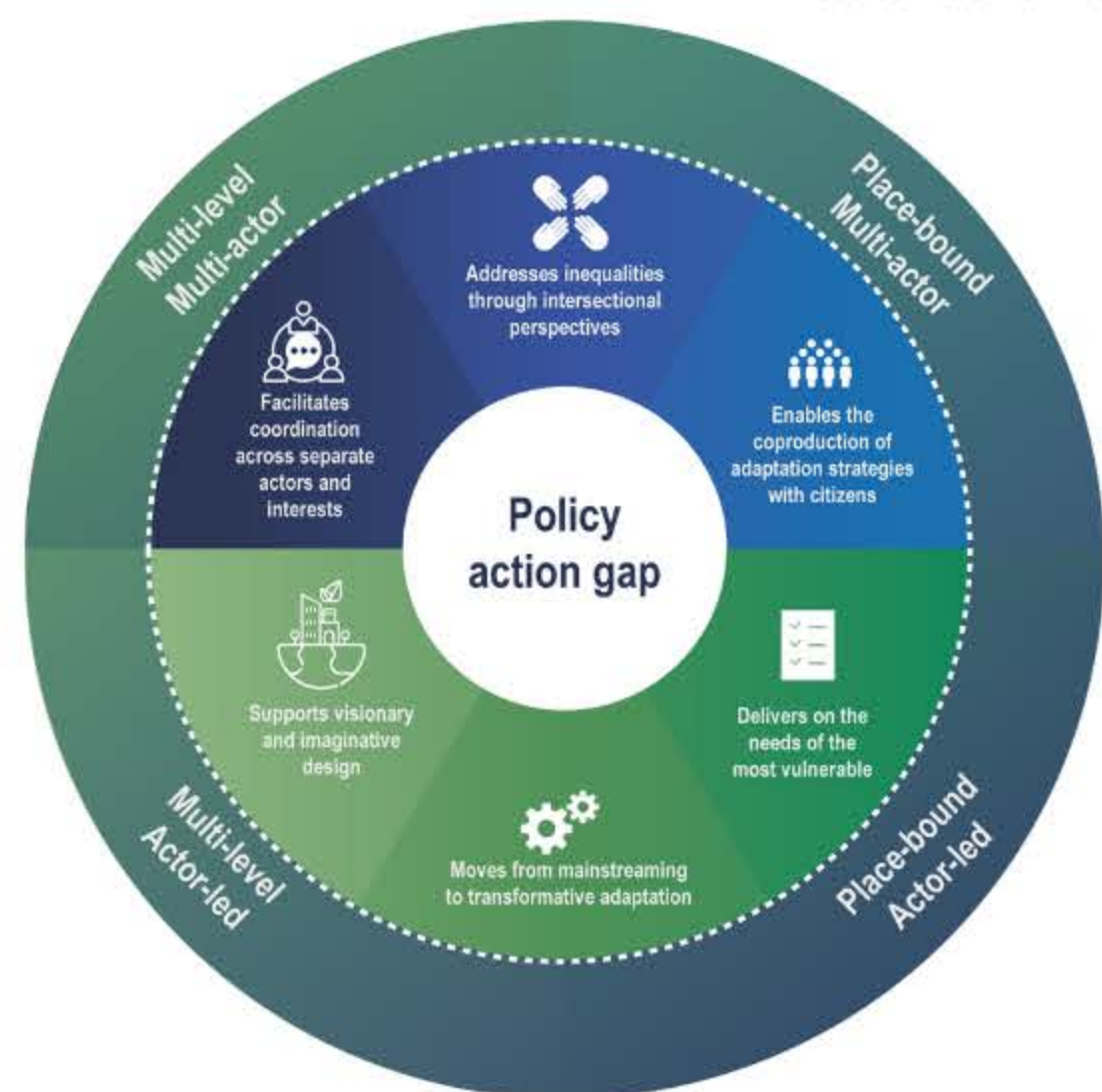


Figure 1 : Solution spaces for the policy action gap

## CLARE-ASEAN RESEARCH THEMES

- Multifaceted and hazard-agnostic response to enhance urban resilience to climate change that leads to structural change in the way cities and sectors can be better acted/governed/managed.
- Resilience against worsening urban heat extremes, including assessment, monitoring, heat management options, tradeoffs, and enabling means for cities.

Focus on short to long-term sustainable solutions for the most vulnerable urban groups and systems, aiming at actionable insights for actors, including urban planners and decision makers.

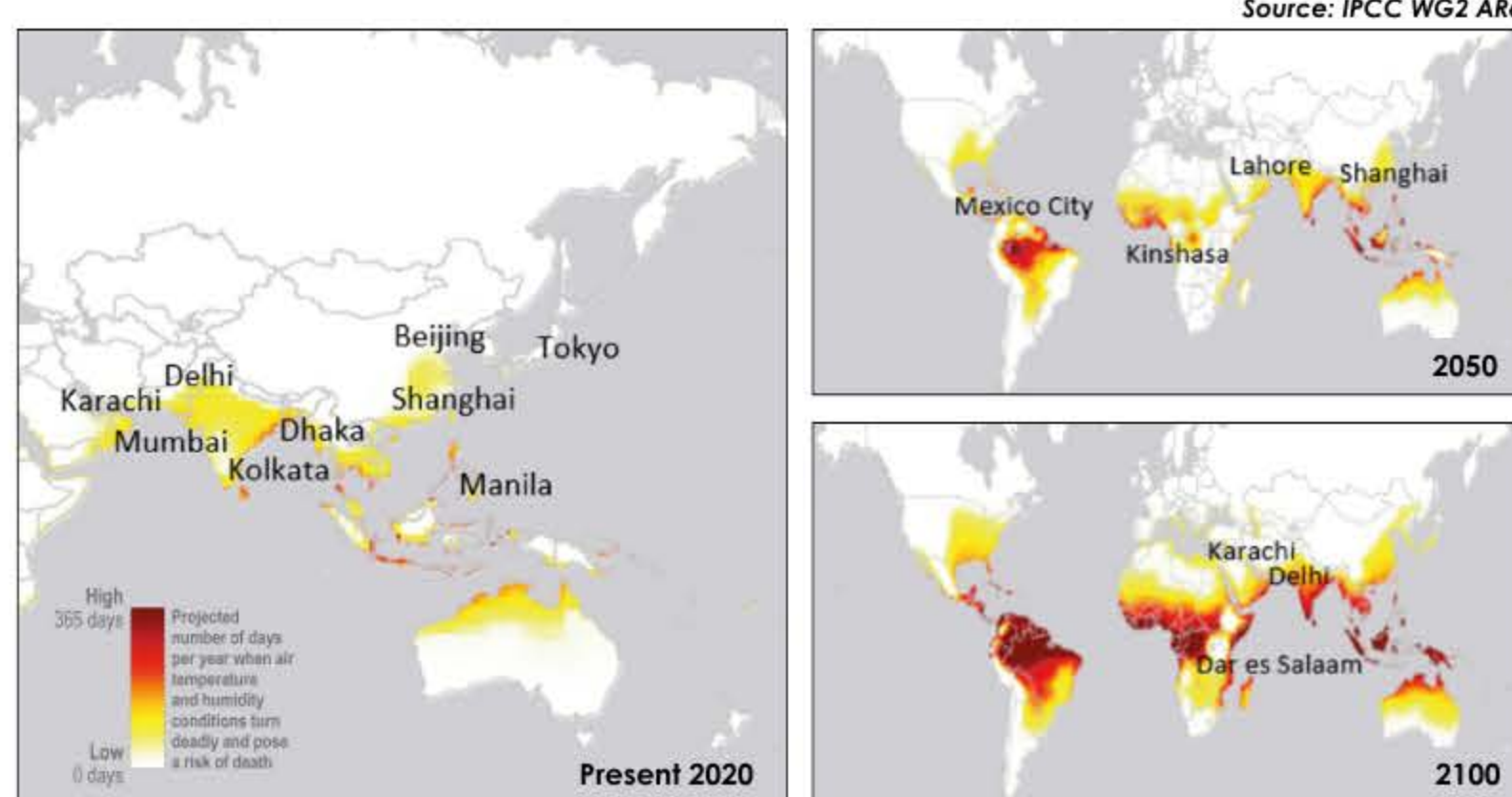


Figure 2 : Global distribution of population exposed to hyperthermia from heat and humidity



Figure 3 : ASEAN Map

## RESEARCH APPROACH



## CURRENT PROJECT STATUS



## PROJECT INVESTIGATORS



Prof. Shobhakar Dhakal (PI)  
Prof. Mukand Babel (Co-PI)  
Prof. Paula Banerjee (Co-PI)  
Dr. Malay Pramanik (Co-PI)

## DURATION



2 Years  
(2024 Nov - 2026 Nov)

## DONOR



Foreign, Commonwealth and Development Office (FCDO)  
International Development Research Centre (IDRC)

## CONTACT INFORMATION

Shobhakar Dhakal ( [shobhakar@ait.asia](mailto:shobhakar@ait.asia), [clare-asean@ait.asia](mailto:clare-asean@ait.asia) )

CLARE is a flagship research programme on climate adaptation and resilience, funded mostly (about 90%) by UK Aid through the Foreign, Commonwealth and Development Office (FCDO), and co-funded by the International Development Research Centre (IDRC), Canada. CLARE is bridging critical gaps between science and action by championing Southern leadership to enable socially inclusive and sustainable action to build resilience to climate change and natural hazards.