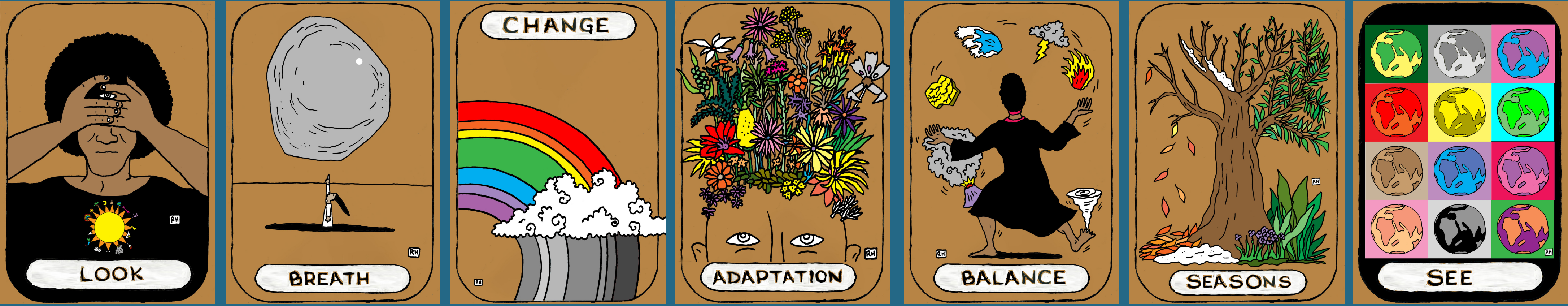


Innovative Facilitation Fellowship Programme for Resilience

Update
May 2025

Imagine Adaptation

Explore and interrogate adaptation concepts and practice. These cards can promote candid dialogue on adaptation and resilience in complex settings.



Developing and co-creating learning tools for candid dialogue Exploring innovative facilitation practice

Core engagement

Seminar Series
9 monthly on different topics

In Person Learning
In person 3 day training workshop in Africa/ Asia

Assignment
Assignment with mentoring support

Training workshop and Graduation
In person 3 day workshop in Africa/ Asia

With support from CLARE, the Red Cross Red Crescent Climate Centre and the International Centre for Climate Change and Development (ICCCAD) are hosting a new fellowship programme to support practitioners and researchers to engage the range of actors whose inputs and participation are critical to co-creating and implementing socially inclusive and sustainable climate adaptation solutions.

The fellowship will deepen participants' facilitation skills, enable them to experiment with new and innovative tools and help them to connect with like-minded colleagues in their region.

The Fellows
We have onboarded 40 fellows to the programme, including 20 fellows from Africa (South Africa, Uganda and Zambia) and 20 fellows from Asia (Bangladesh, Nepal and Philippines).

We are excited to have fellows in the programme who bring amazing experience and come from a variety of sectors - enriching our learning environment!

The one year programme is creating an engaging learning environment for the fellows, exploring new content, co-creating learning tools and sharing experiences.

The fellowship programme also includes an active mentoring component - supporting fellows to put their skills into practice and sharing the experiences with the wider group.

Progress to date

We have started the fellowship lectures and had the first fellowship in person retreat in Lusaka in April 2025.

The fellowship retreat for the Asian fellows is planned for June 2025.

These retreat events will also co-create lectures, exercises and stories for the podcast series and other learning tools.

Learning tools

We have launched the following learning tools:

Imagine Adaptation - A deck of creative association cards to explore complex concepts of adaptation.

Feel Adaptation - A deck of playing cards to surface emotions that are impacting complex dialogues and can help us to navigate complexities.

Adaptation Connect - A deck of cards with a variety of interactive learning activities to infuse dialogue and learning with creativity to allow us to connect the mind and the heart.

Upcoming tools & processes

Podcast series: What can go wrong in facilitation? (and what can we learn from this?) - June 2025

Facilitate! - a virtual training course for self learning, exploring tips and tricks of process design and facilitation - May 2025

Open seminar series: Facilitation in action - designing and facilitating complex multi stakeholder dialogues - October 2025

Self Learning

PARTICIPATE!
Virtual training course

Facilitate!
Virtual training course

What can go wrong in facilitation?
Podcast series

OPEN

LAUNCH MAY 2025

LAUNCH JUNE 2025

PERSPECTIVE
Imagine Adaptation

Feel Adaptation

The Team



How can you engage?

- **Use the learning tools in your own practice** - we are happy to share ideas with you about how this can enrich your processes.
- Upskill by **completing the free online training courses** Participate! and Facilitate!
- **Co-design and facilitate a process with one of the Fellows** in your region - and create a joint learning environment.
- **Share stories of facilitation challenges** to be included in the podcast series.
- **Share your ideas, games and innovative processes** with us - so we can spread a growing collection of processes that can change the way we interact, learn and take action.

Contact: Bettina Koelle for more information: koelle@climatecentre.org



CLARE is a flagship research programme on climate adaptation and resilience, funded mostly (about 90%) by UK Aid through the Foreign Commonwealth and Development Office (FCDO), and co-funded by the International Development Research Centre (IDRC), Canada. CLARE is bridging critical gaps between science and action by championing Southern leadership to enable socially inclusive and sustainable action to build resilience to climate change and natural hazards.

The views expressed herein do not necessarily represent those of the UK government, IDRC or its Board of Governors.

Learn more about CLARE: www.clareprogramme.org

Feel Adaptation

Explore emotions in the facilitation process and in adaptation practice. These cards can be used in our facilitation practice to surface emotions and connect these to strategic planning and action.

